

NURSESCHOICE



“ENHANCE YOUR
SELF-CARE ROUTINE”

ABOUT US

NursesChoice – The number one choice when it comes to clinic results in the comfort of your own home.

NursesChoice is an Australian owned and operated clinically tested LED face mask designed by a registered medical professional. If you are looking for clinical results that stand out from the rest while staying in the comfort of your own home this is the LED mask for you.

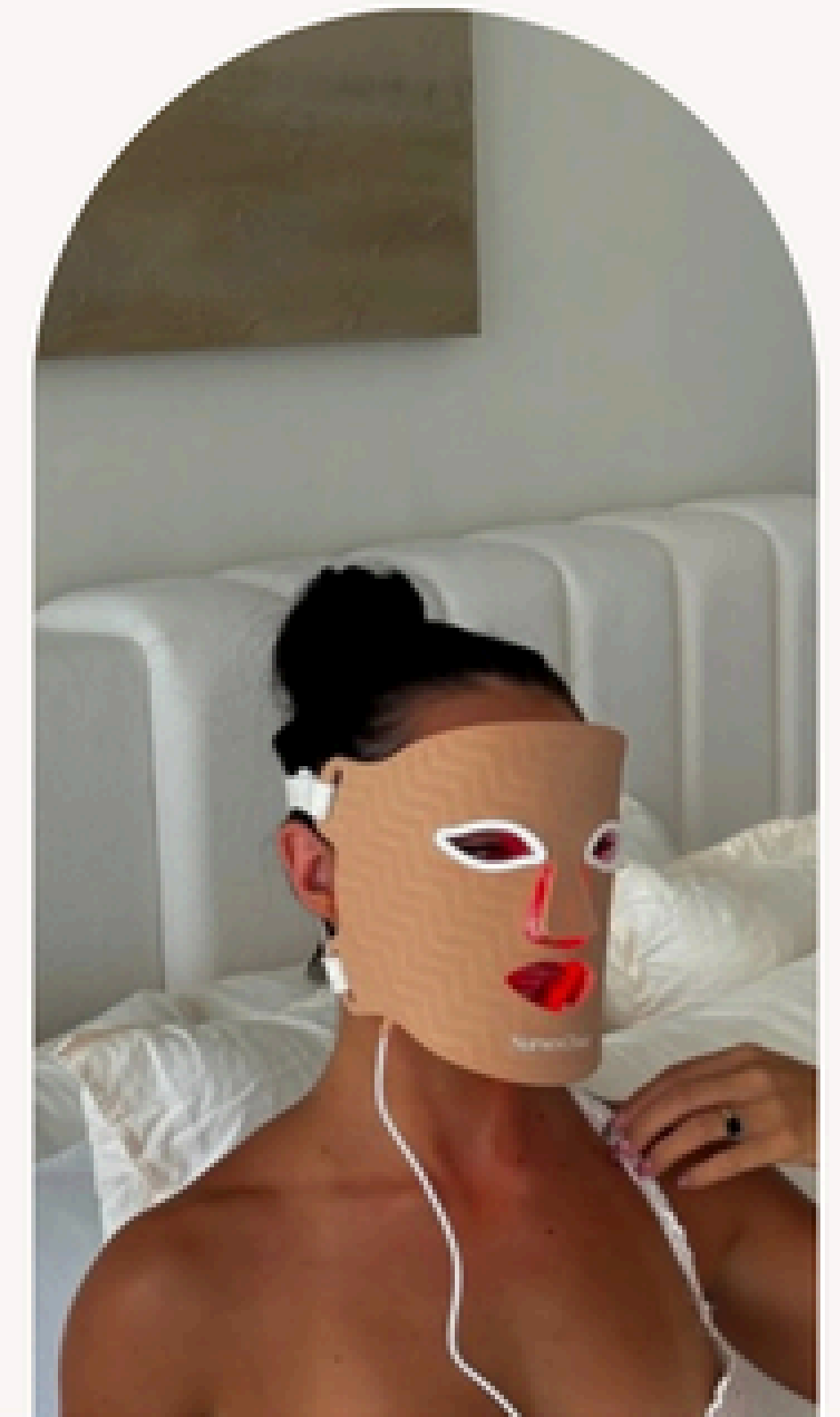


OUR MISSION

At Nurses Choice, our mission is to empower individuals to achieve radiant skin and enhance their self-care routines. We are dedicated to providing the highest quality skincare solutions that visibly improve skin health, boost confidence and foster a sense of well-being. Our commitment extends beyond products; we strive to educate our community about the benefits of LED therapy and to inspire a holistic approach to skincare.

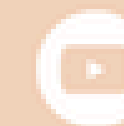


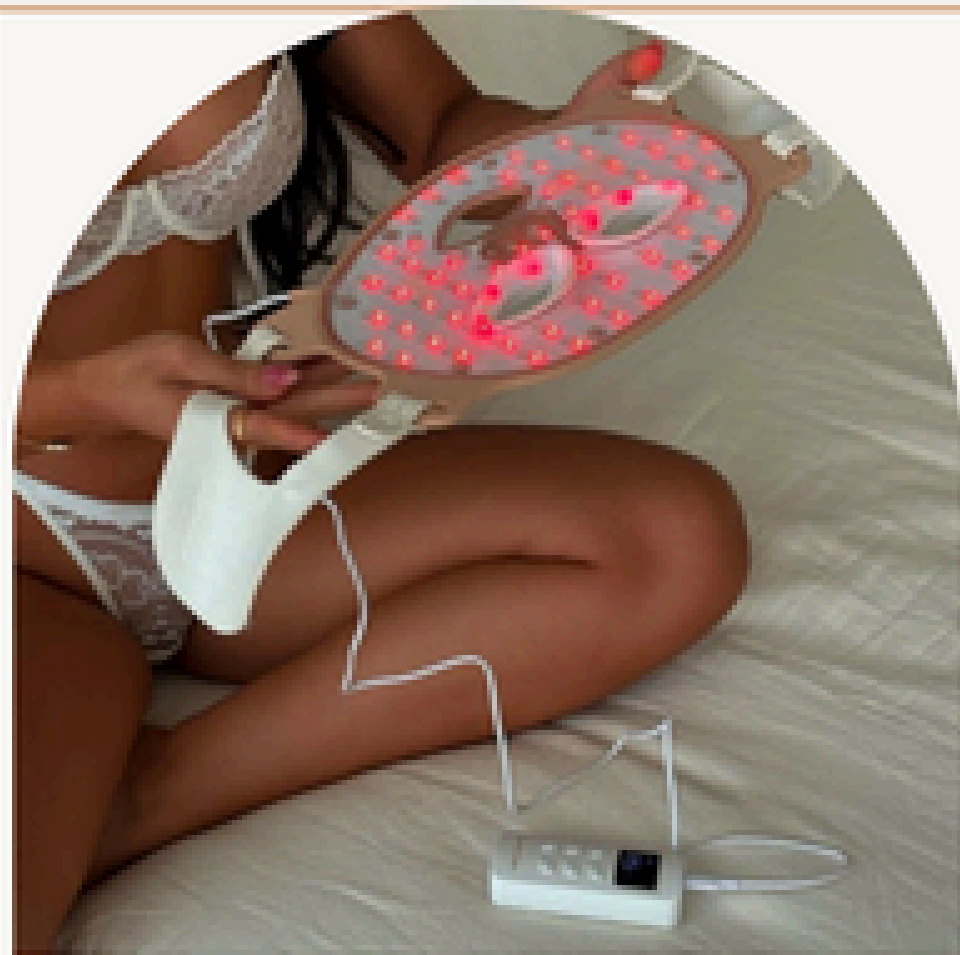
ADVANCED LED TECHNOLOGY



NursesChoice

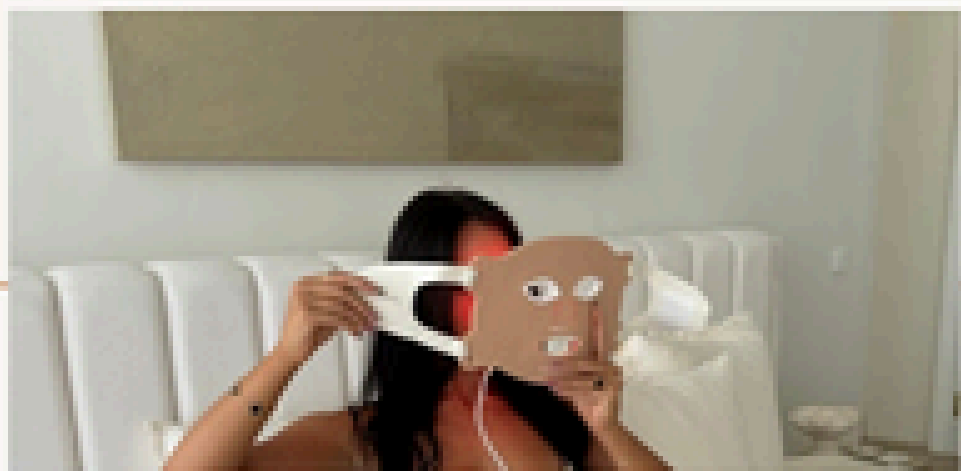
NursesChoice@outlook.com
www.NursesChoice.com.au





WHY NURSESCOICE?

An LED device that provides a comfortable 10 minute home light therapy experience, using optimal placement to maximise skin improvement

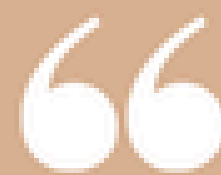


SPECIFICATIONS

- Nurses Choice highly effective and clinically proven LED Light Therapy Mask
- Red Light 630nm
- Blue Light 460nm
- Yellow Light 590nm
- Infrared Light 850nm
- Soft and flexible silicone facial mask
- Adjustable and comfortable Velcro head straps
- Program times 10/15/20/25/30 minutes
- Mask dimension 31*19*0.7cm
- Operating temperature 0°C to 30°C
- Storage and transport temperature : 10°C~50°C
- Electrical output : 5W
- Total of 240 LED's
- Irradiance out 53mw/cm2

STEPS

- ✓ Read Product Manual
- ✓ Charge your controller
- ✓ Connect controller to device
- ✓ Cleanse and dry skin
- ✓ Secure the device to your head
- ✓ Start your desired treatment
- ✓ Remove the mask and apply serum



I have tried a couple of LED face masks previous to the Nurses Choice mask and none came close to the comfort and quality of this new mask. I take it with me everywhere.

-MEGAN S



NursesChoice

SCIENCE

UNDERSTANDING LED LIGHT THERAPY

Led light therapy involves the use of specific wavelengths of light to penetrate the skin to stimulate cellular processes.

WHAT DOES EACH LIGHT COLOUR DO?

Red light has been found to penetrate deep within skin's dermis to boost collagen production and improve the appearance of fine lines & wrinkles.

Yellow light is great for improving the appearance of uneven skin tone, reducing redness, reducing pores size and brightening the look of the skin.

Blue light has been found to target the outer layer of the skin helping reduce the appearance of acne and acne blemishes while promoting a clearer looking complexion.

Infrared light is associated with stimulating the formation of collagen and elastin, minimising the look of pores, while encouraging the appearance of plumpness, smoothness, and radiance.

